



THRIVE ORANGE COUNTY

2019 COMMUNITY SURVEY

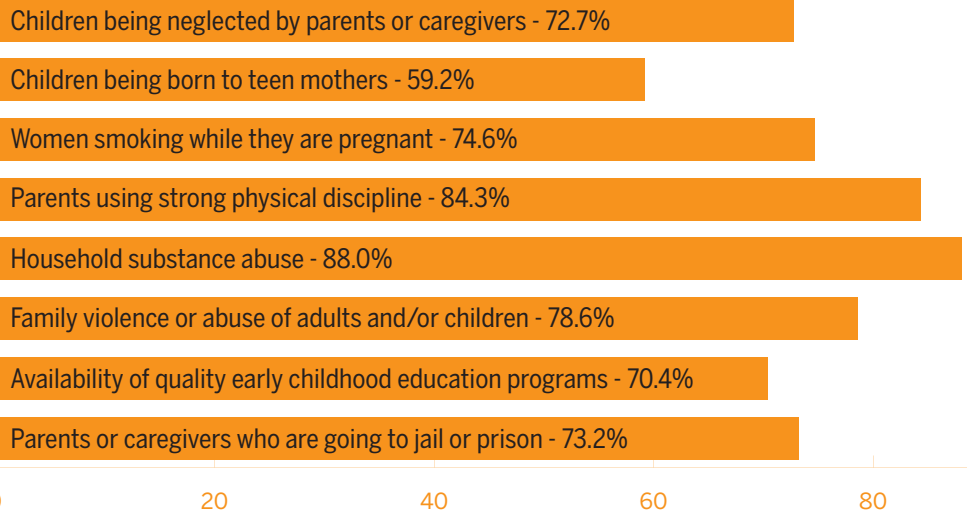
SNAPSHOT

ABOUT THE SURVEY

A community-wide survey was conducted by Thrive Orange County to understand citizens' perspectives regarding community concerns, resources, and barriers. Survey respondents included 243 adults, ranging in age from 18 to 89 years old.

COMMUNITY CONCERNS

Community members were asked to indicate their level of concern regarding a series of 8 challenges in the community. Responses could range from 1 "not at all" to 5 "very much." The chart shows the percentage of respondents who selected a 4 or 5 "much" or "very much" as their level of concern related to each topic listed.



About **1 in 5** respondents were aware of what Adverse Childhood Experiences (ACEs) are, while 85 percent knew the definition of trauma.



AWARENESS OF COMMUNITY RESOURCES

90%

of respondents were aware of the Department of Children and Family Services (DCS)

74%

of respondents were aware of Hoosier Hills PACT

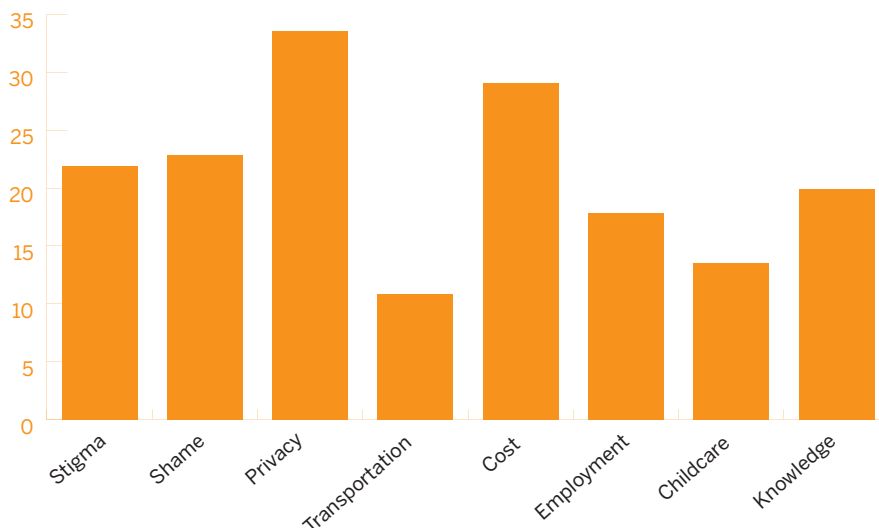
60%

of respondents were aware of Southern Indiana Community Health Care and Life Springs



BARRIERS TO GETTING HELP FOR MENTAL HEALTH OR SUBSTANCE USE NEEDS

Community members were asked to indicate the extent to which eight concerns would be a barrier to them in accessing professional help for mental health or substance use needs if ever needed in the future. Responses could range from 1 “not at all” to 5 “very much.” The chart below includes the percentages of 4 or 5 responses indicating “much” or “very much” as the extent to which the barrier would impact their access to help.



Privacy—or worrying that their information would not be kept private—was the most common concern among respondents with 33.5% indicating that issue as a barrier to help.

ABOUT THRIVE ORANGE COUNTY

Thrive Orange County was founded in early 2019. School teachers and health care workers began to have conversations about adverse childhood experiences (ACEs).

In their workplaces, they could see the effects of ACEs and trauma on children and adults. Thrive Orange County has evolved into a growing group of community stakeholders. We all share a common interest in growing a safe, stable, nurturing community for all. Join us on Facebook at www.facebook.com/CultivatingResilienceGrowingHope.

SURVEY SAMPLE NOTES

The original sample was 35.1% men, and 64.9% women. The US Census indicates that the population of Orange County is 49.9% men, and 50.1% women. Therefore, to more accurately reflect the distribution of responses by gender, the survey responses were weighted. The results presented reflect the responses of 119 men and 124 women from Orange County. Those who responded to the survey ranged in age from 18 year old to 89 years old. (Approximately six respondents to the survey were deleted because they were less than 18 years of age.) The average age was 45.9 years of age. Most respondents (85.4%) had a high school education or higher. This is comparable to the US Census Data that indicated 83.3% of people aged 25 years or older had at least a high school degree.

This survey snapshot was prepared in partnership with the Indiana University Center for Rural Engagement.